

WiCell.

Space-saving drawer magazine

To realise cost-effective automation, the WiTower product offers a compact footprint. Thanks to the flexible design options, the magazine can be easily customized to meet individual customer requirements.

This way we can:

- Ensure that the right concept is in our hands
- Choose the right technologies and suppliers
- Get a clear overview of the project and the investment

WICELL DATA SHEET

» Footprint::	3,1 m2
» Dimensions:	1,5 x 2,2 x 2,3 m
» Storage capacity:	up to 5 drawers
» Payload per drawer:	up to 300 kg
» Tray size:	600 x 1100 mm
» Robot gripper:	Single gripper Double gripper
» Robot payloads:	35 kg to 210 kg



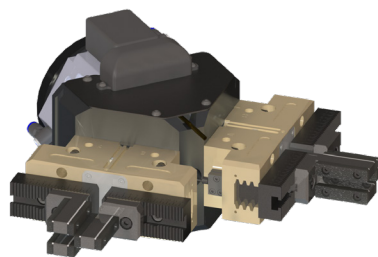
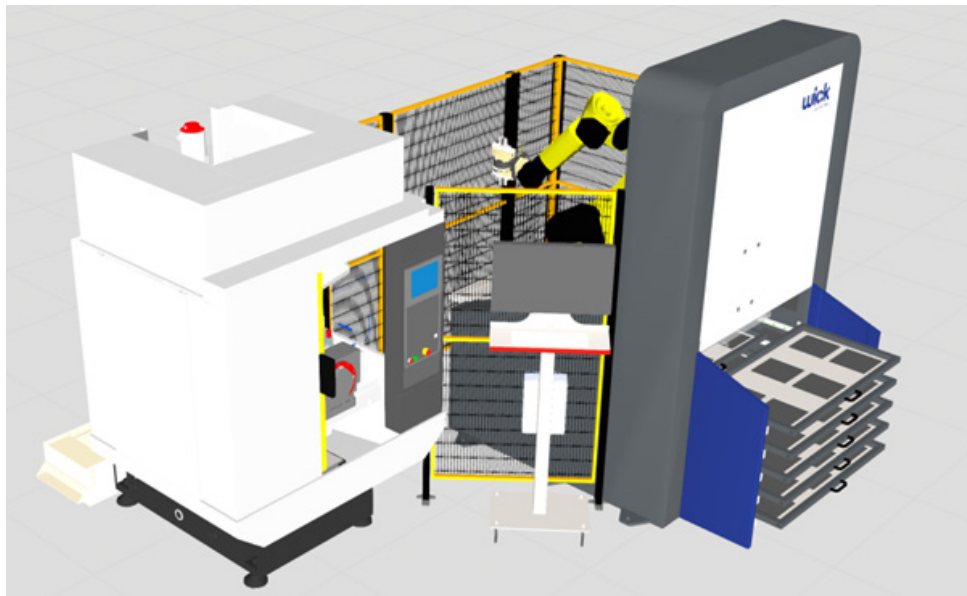
The magazine can be loaded and unloaded at any time without interrupting ongoing operations. The lift can place individual trays on an upstream transfer station. The automated process to the processing machine remains fully intact and is not interrupted.

Software options:

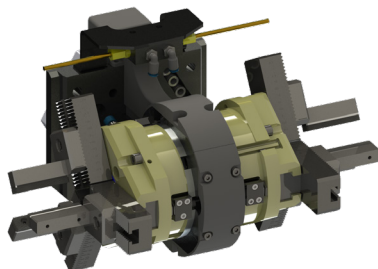
- » Job manager
- » Multi-machine operation

WiCell.

Milling machine with WiCell and
a 35 kg Fanuc robot



Parallel double gripper
for parts up to 200 mm



Three-jaw double gripper
for parts up to 200 mm

R. Wick AG
Alte Zugerstrasse 10
6403 Küsnacht a/R
T +41 41 747 11 11
wick@wick-ag.com
www.wick-ag.com